

I-680/SR4 Interchange Improvements

Ivan Ramirez

Director of Construction

Contra Costa Transportation Authority

May 17, 2023



CONTRA COSTA
**transportation
authority**

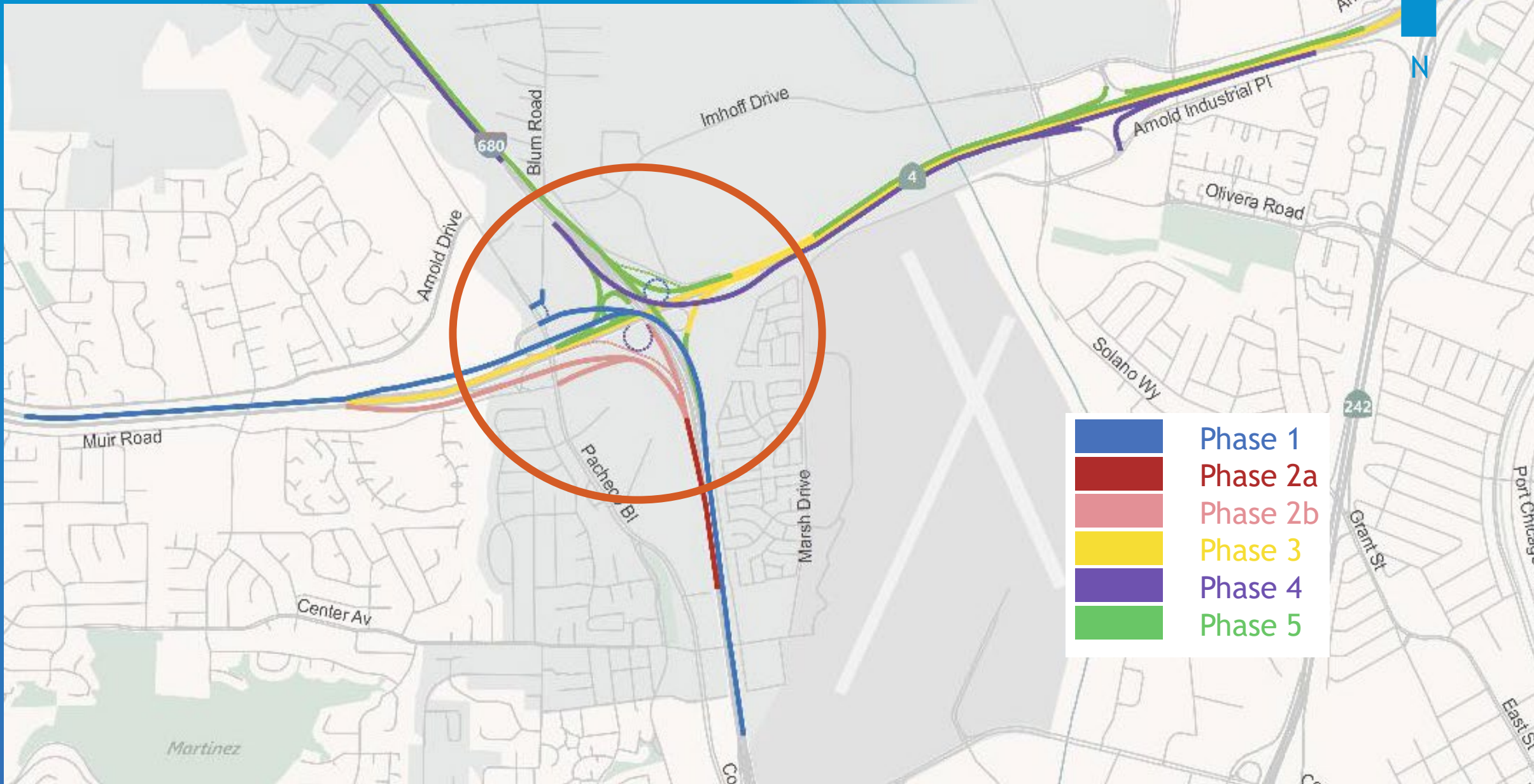
Project Location

I-680/SR4 Interchange Project



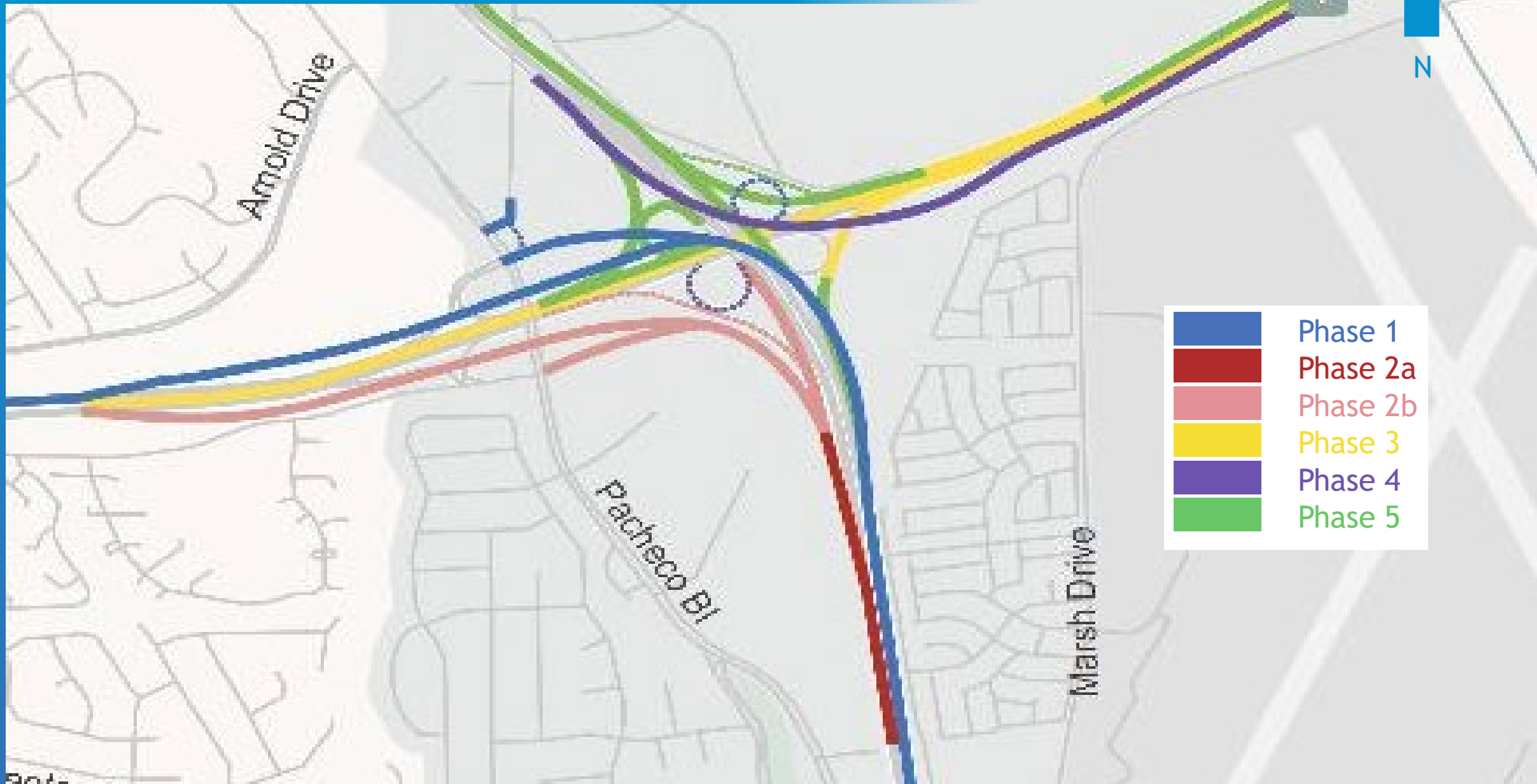
I-680/SR 4 Project




I-680/SR4 Interchange Project



I-680/SR 4 Project

I-680/SR4 Interchange Project



	Phase 1
	Phase 2a
	Phase 2b
	Phase 3
	Phase 4
	Phase 5

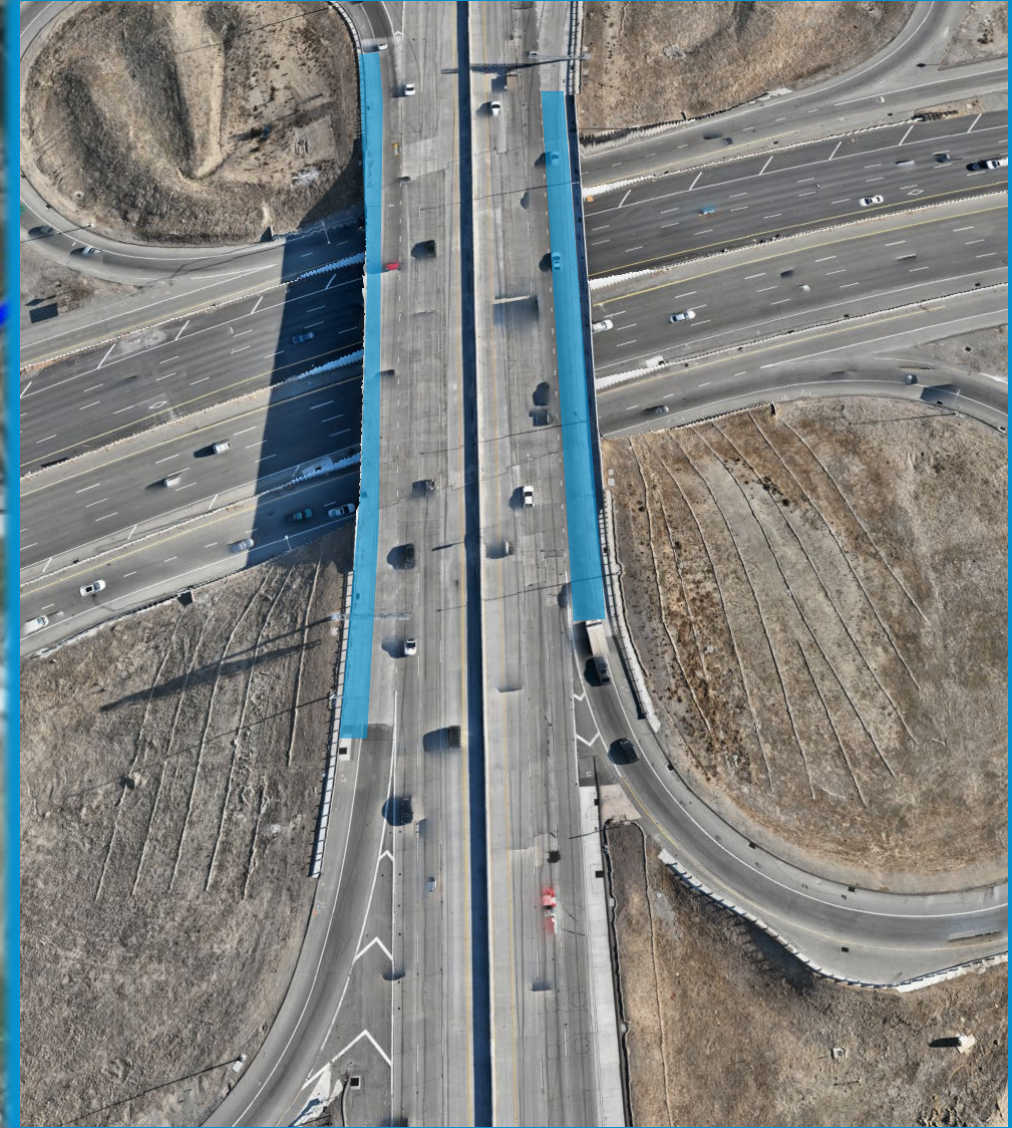
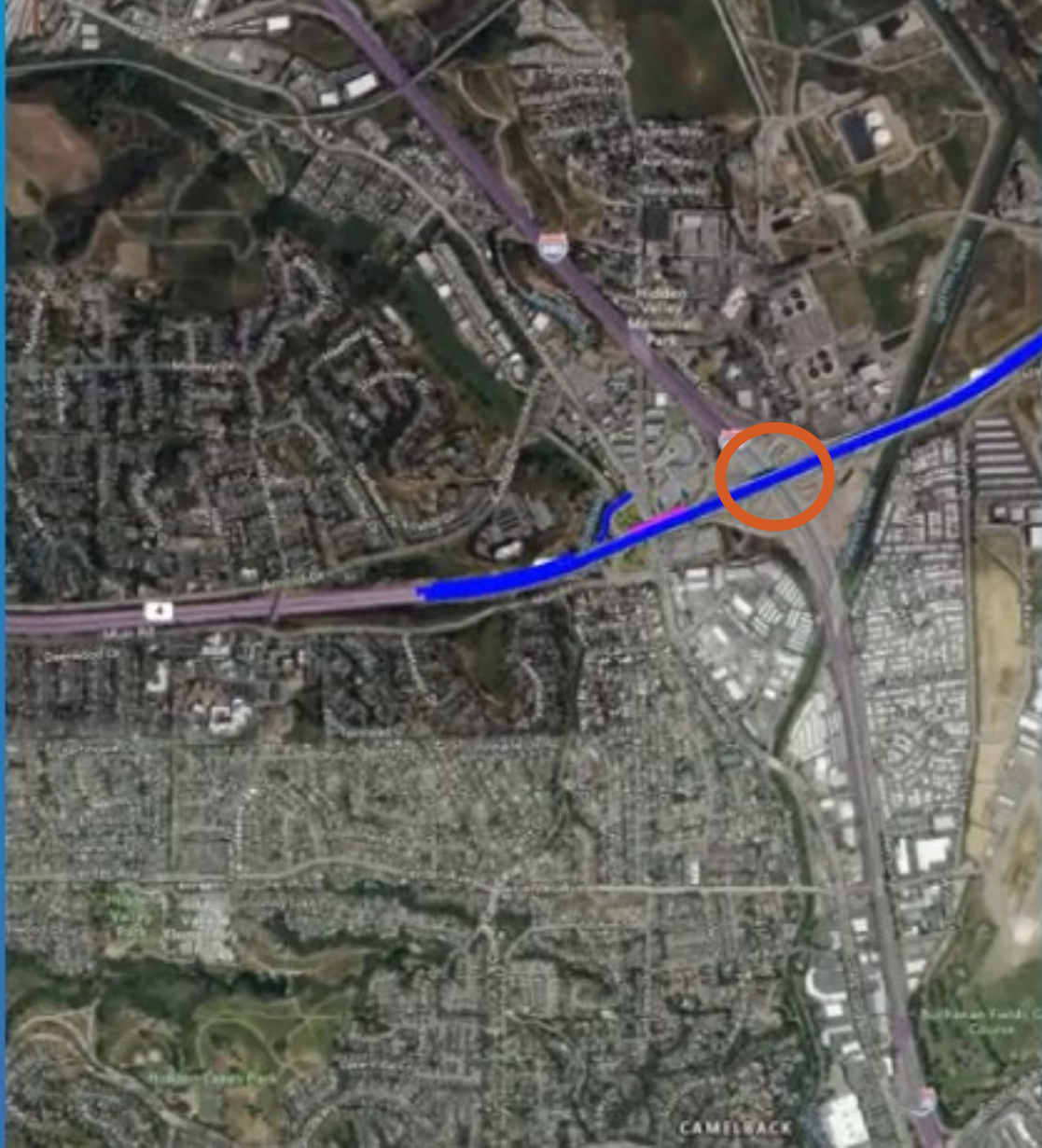
Phase 3 – Pacheco Bridge

I-680/SR4 Interchange Project



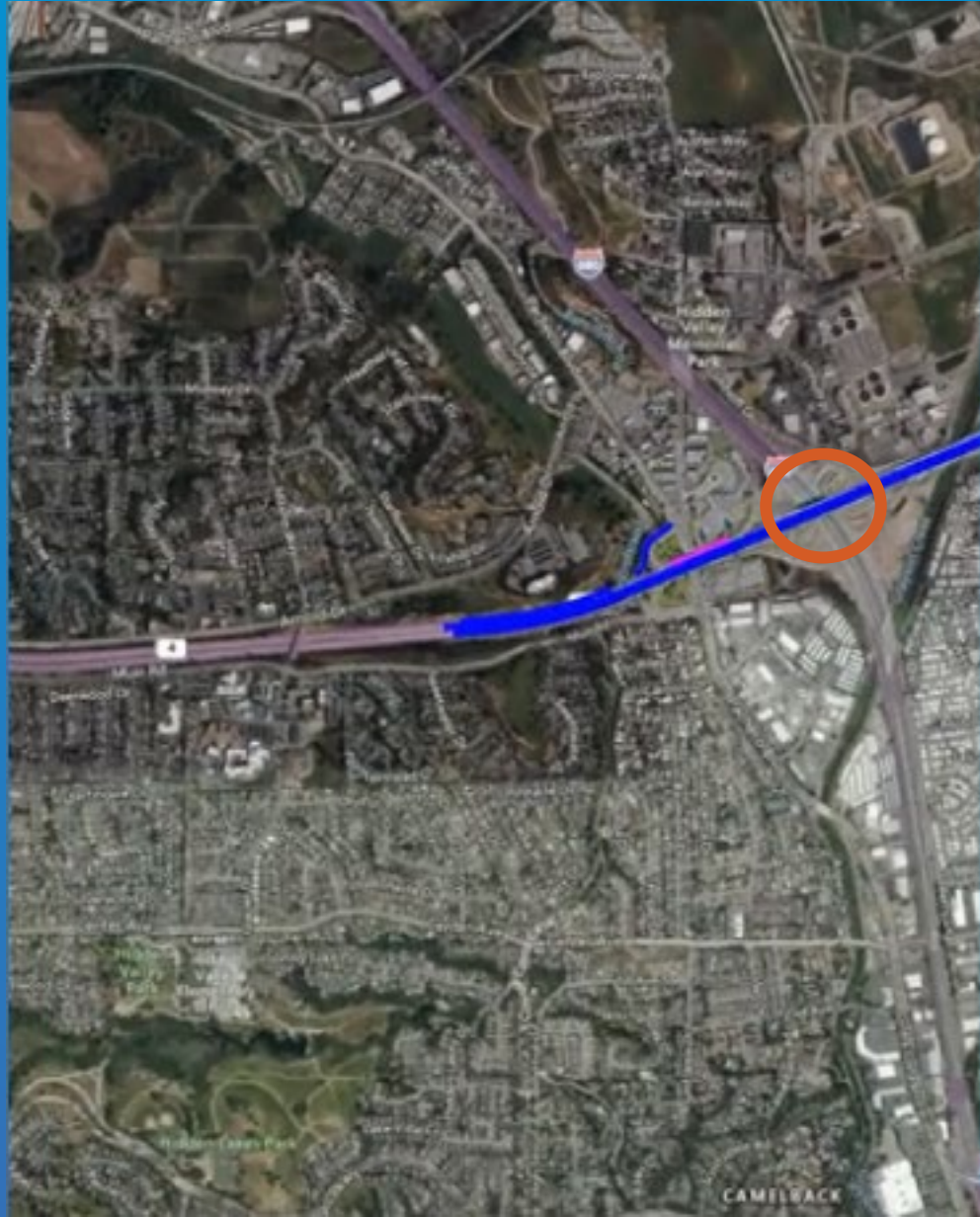
Phase 3 – Widened I-680/SR4

I-680/SR4 Interchange Project



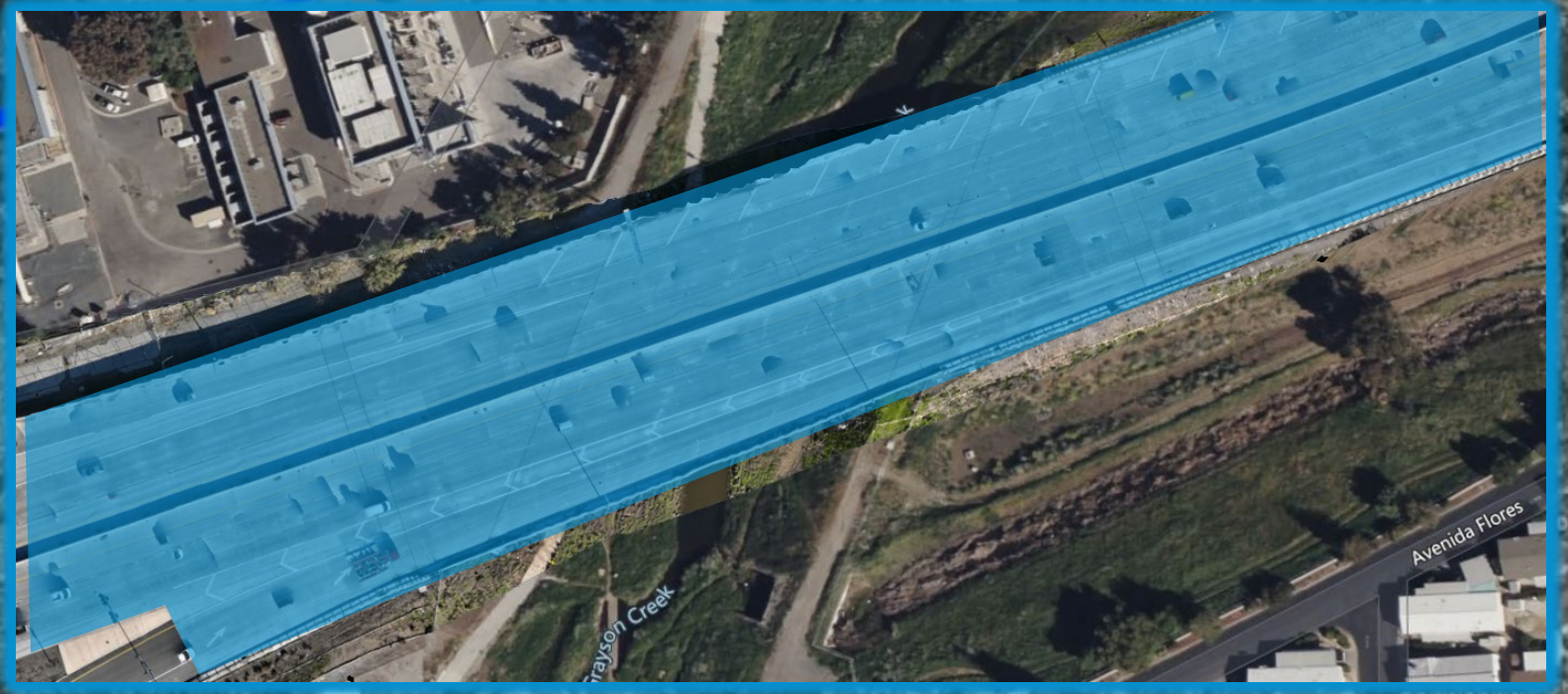
Phase 3 – Off/On Ramps I-680

I-680/SR4 Interchange Project



Phase 3 – Grayson Creek Bridge

I-680/SR4 Interchange Project



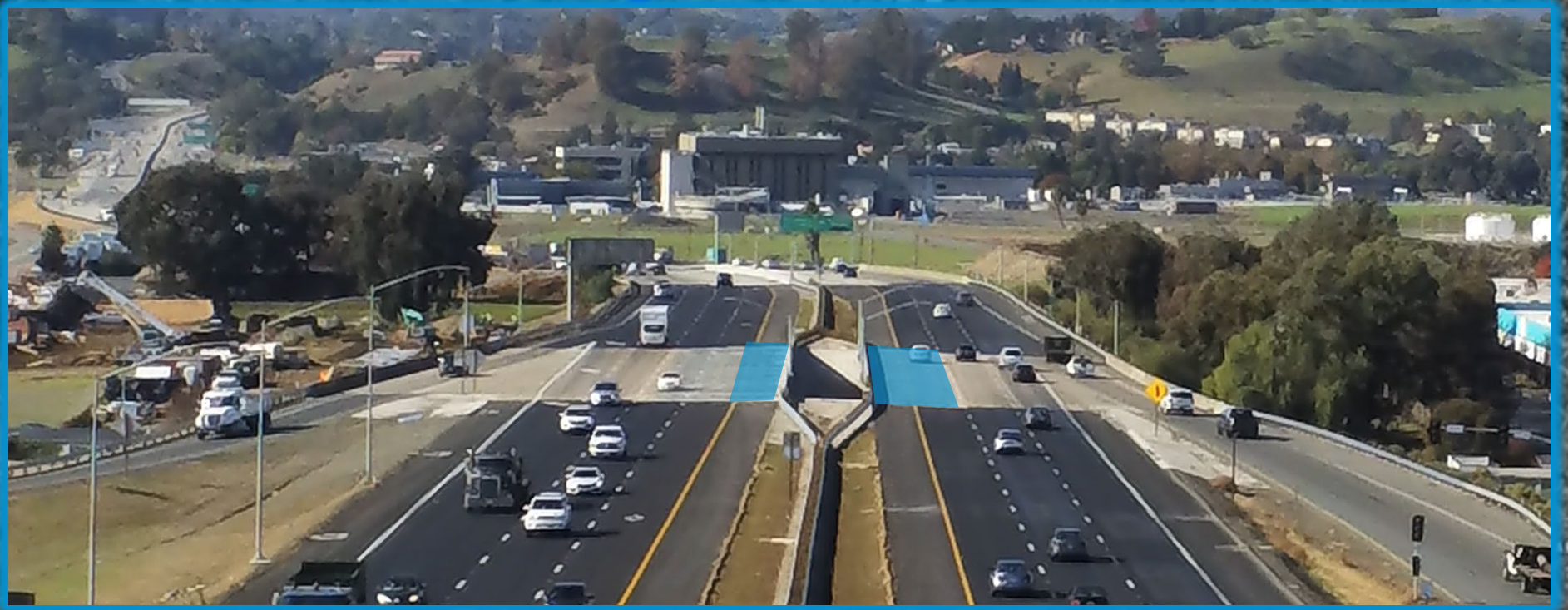
Phase 3 – Walnut Creek Bridge

I-680/SR4 Interchange Project



Phase 3 – Solano Bridge

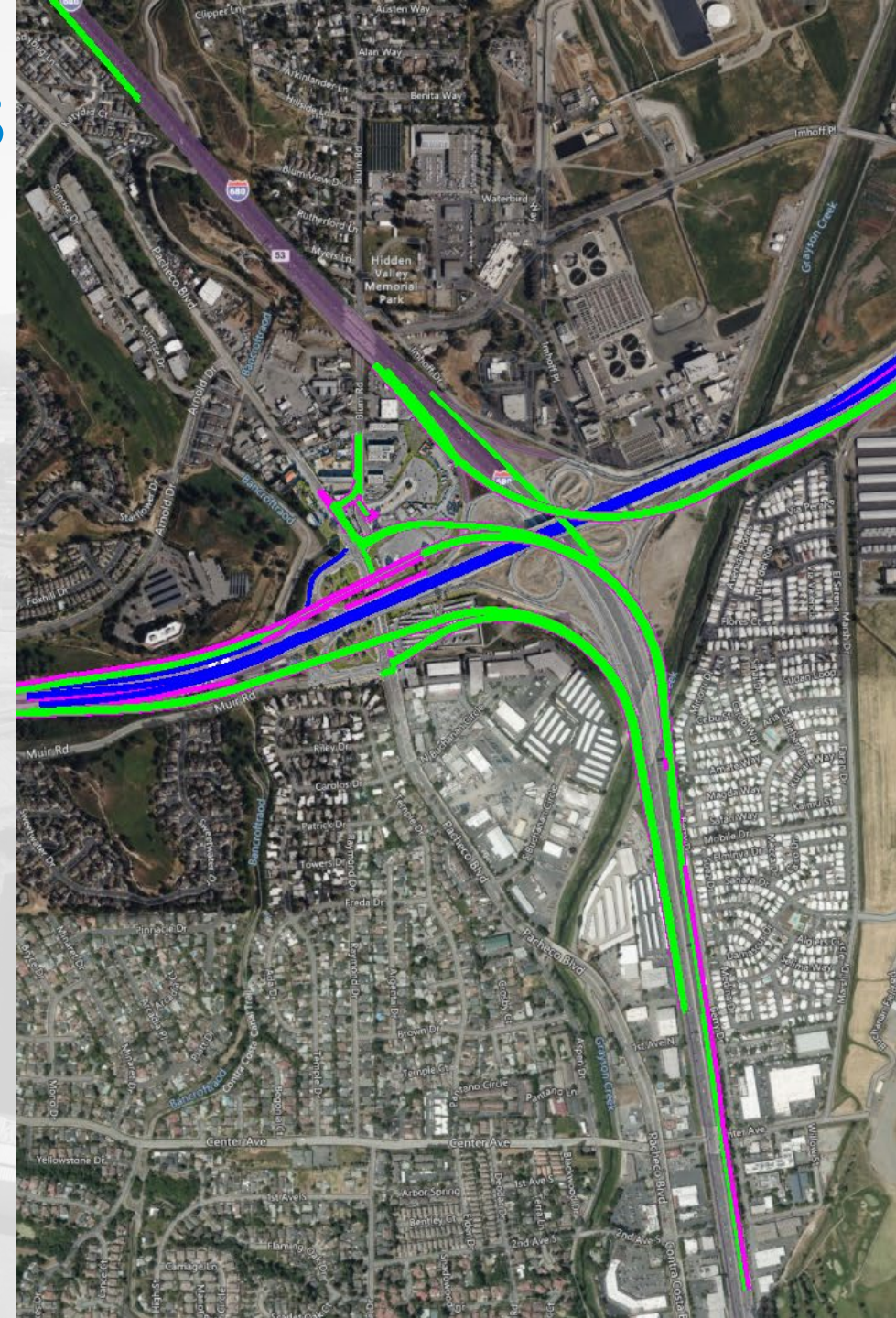
I-680/SR4 Interchange Project



Phases 1/2a/4 Project Details

- Improve operational efficiency of the I-680/SR 4 Interchange and reduce traffic congestion and delays
- Improve safety by eliminating short weaving and merging sections
- Provide direct local access between I-680 and Pacheco Boulevard
- Accommodate existing and planned growth in travel demand within these segments of I-680 and SR 4

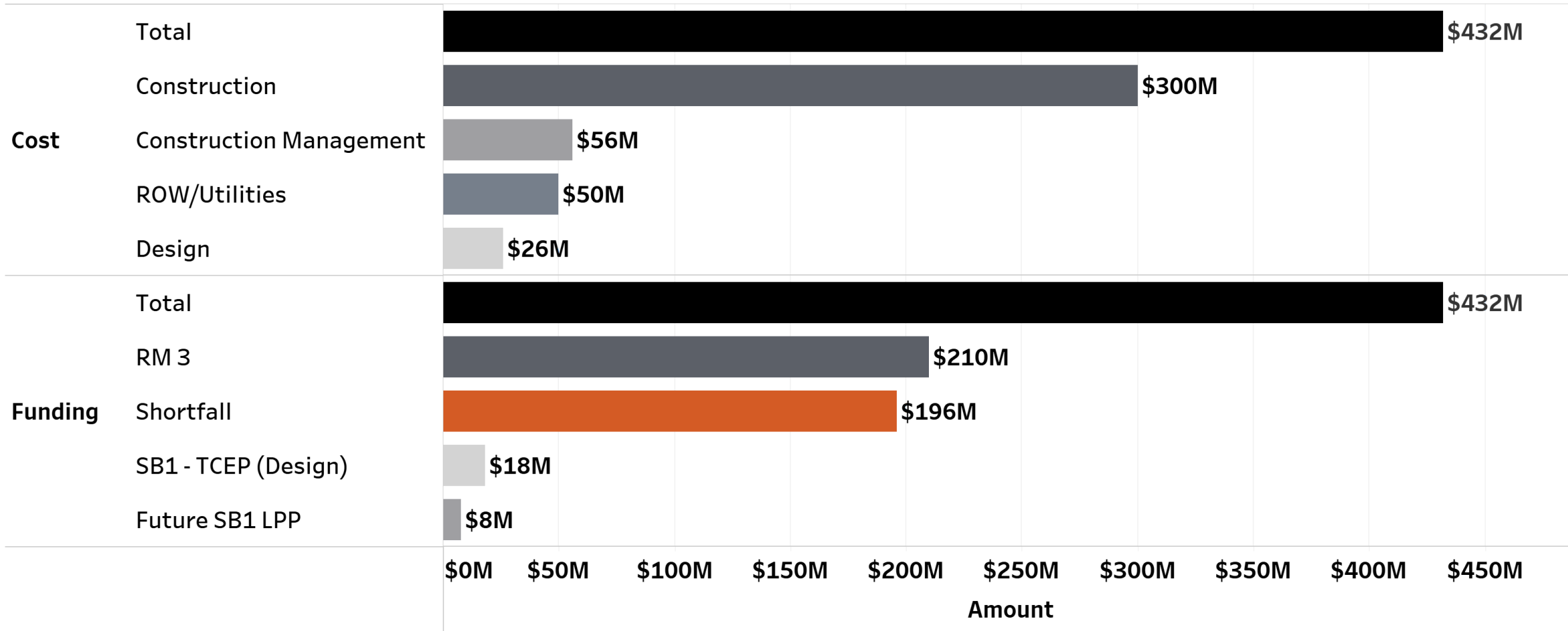
Cost Estimate	
Design	\$26 Million
ROW/Utilities	\$50 Million
Construction	\$300 Million
Construction Management	\$56 Million
Total	\$432 Million



Phases 1/2a/4 Schedule



Phases 1/2a/4 - Cost vs Funding



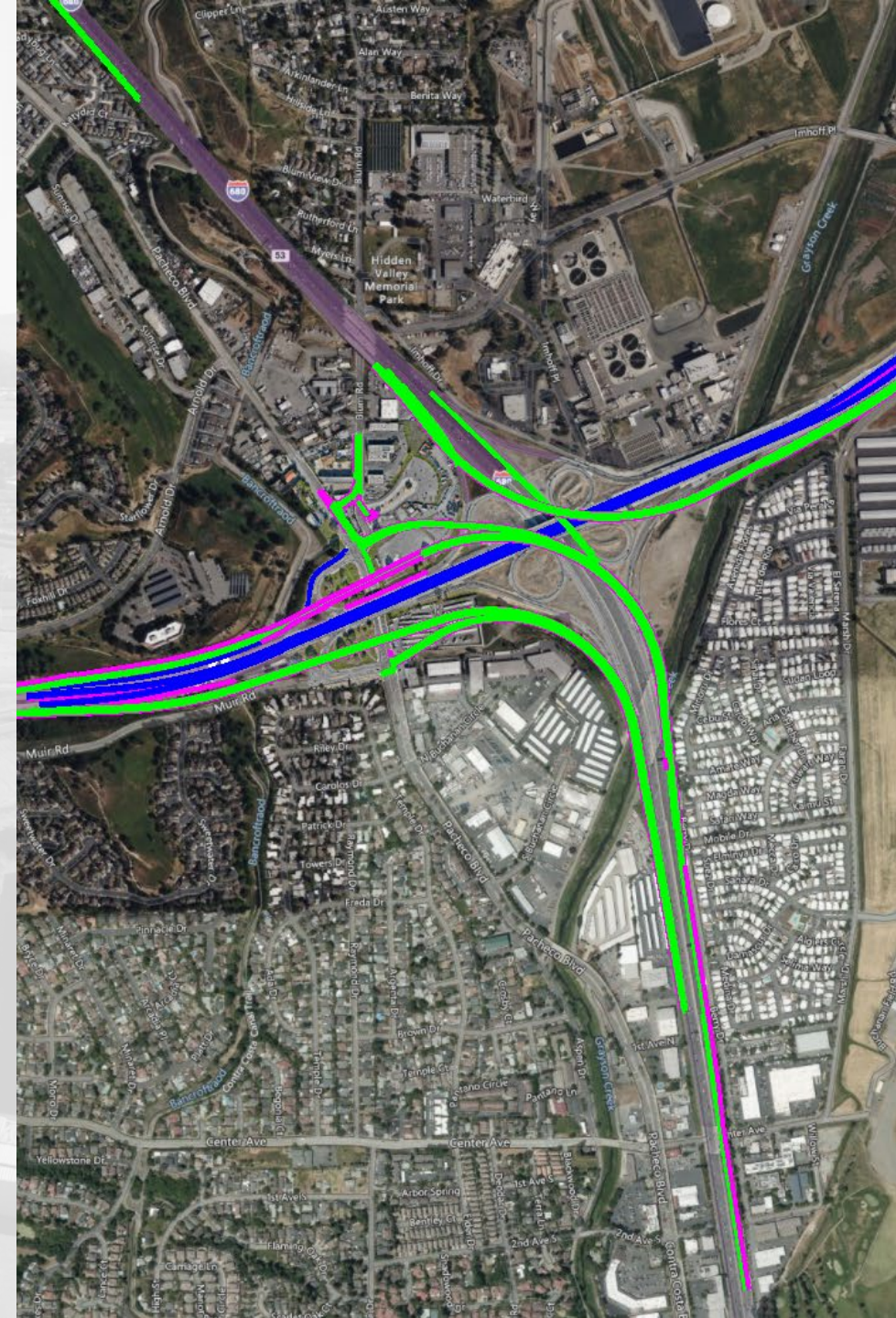
Phases 1/2a/4

CHALLENGES

- Funding
- Resources at Caltrans to meet the schedule
- Availability of Funding to begin ROW Support and Utility Relocation
- Relocating of Oil Pipeline
- Relocating 84" Sanitary line
- ROW

QUALITY ASSURANCE PLAN (QAP)

- Quality Assurance Program to review the Design, Staging, and Utilities.
- Building Information Modeling
- Additional Boring to identify underground utilities



Questions



CONTRA COSTA
**transportation
authority**